

NEW JERSEY'S HOME & DESIGN MAGAZINE

design NJ

APRIL/MAY 2014

SUBURBAN CHIC

What's New in Home Fashion Closets that Click

How to Display Innovative Art Beauty in the Backyard

The living room is a formal space with buttercup-yellow-glazed walls that create a serene atmosphere. Twin sofas designed by KBK Interior Design have split-arm detailing and are upholstered in an elegant embossed linen with bullion fringe. Embroidered and beaded throw pillows provide an accent and complement the walls. A goldleaf coffee table with an inset mirror top sits between the sofas.



The foyer sets the stage for the home's warm color scheme. The walls are covered in a bright yellow-and-ivory hand-blocked paper that contrasts with the red Wilton carpet on the stairway. In the narrow hallway, designer Kingsley Belcher Knauss placed an antique regency credenza with gilt ormolu and a limestone top for displaying keepsakes and collections. Gilt-leaf double-arm sconces with handmade English shades are paired with an antique gilt mirror. Pakistani hand-knotted rugs add texture and warmth to wood floors.

A designer combines elegance and livability in a Westfield home

Best of Both Worlds

WRITER ROBIN AMSTER

INTERIOR DESIGNER KINGSLEY BELCHER KNAUSS, PROFESSIONAL MEMBER ASID

PHOTOGRAPHER PAUL S. BARTHOLOMEW

The renovation of a 1930s Westfield home is proof that it's possible

to meld formal style with livable features. The imposing center-hall colonial-style home is traditionally elegant yet comfortable for a family of six thanks to a redesign by Kingsley Belcher Knauss, a professional member of the American Society of Interior Designers, state-certified interior designer and owner of KBK Interior Design in Westfield.

"This is the most formal client I've ever had,"

Knauss says. "It's a little unusual these days because most people have a more casual approach to interiors. Although the family has teenagers and a younger child, this is what they want and how they like to entertain."

Knauss' client says her style has always been traditional and that was reflected in the couple's choice of a home. They looked at new construction before purchasing this five-bedroom stone-clad home. "We like



Knauss created a slightly more casual look for the family room along with fabrics that stand up to harder wear. The sofas are covered in linen chenille, and the game chairs have a heavy-duty coral-and-gold weave. Two ceiling trays mark separate seating areas. Knauss used two types of window treatments to deal with different window heights, adding a valance over one to give it more height.

Old World charm, and they [the newer homes] didn't have the same patina. Still we're casual people who tend to like a formal look. We do sit on the couches, throw blankets on ourselves and watch television."

SEAMLESS RENOVATION

The family lived in their new home for about a year before deciding to renovate the kitchen. That led to a bump out at the back of the home that expanded the kitchen, dining room and master suite and created a new family room. The project also converted an exterior sun porch at the side of the home into an office for the wife.

The homeowners ripped out a backyard swimming pool and pool house to accommodate the expansion. "It wasn't a beautiful pool; it was old blue cement surrounded by a cracked patio," the wife says. "We live on a one-acre property. The pool just ate up a lot of the backyard."

Knauss says the renovation retained the separate

rooms typical of older houses, but allowed a wide opening with columns between the living room and the spacious new family room.

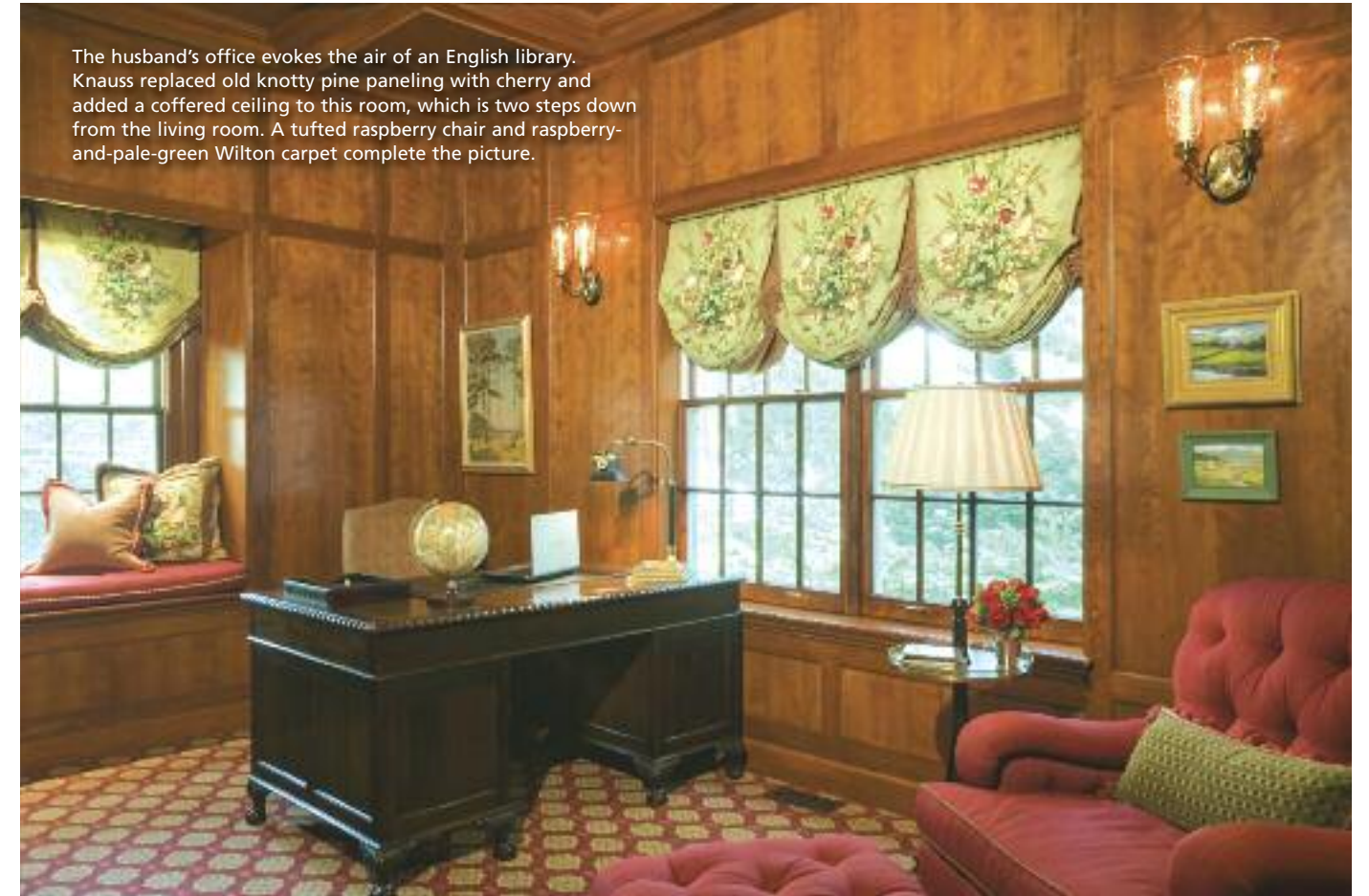
"We wanted a seamless renovation with an Old World yet updated look," the wife says.

Knauss redesigned all of the interiors except for three bedrooms for the teenaged sons, who would be leaving home relatively soon. The younger daughter, however, enjoys a redesigned bedroom.

The accent is on warm golds and raspberries throughout the public spaces except for the kitchen, where the designer introduced chartreuse and blue.

LIVABLE ELEGANCE

To add livability to the elegance, Knauss chose a mix of durable and formal fabrics throughout the home. In the family room, which has an English flair, sofas are covered in linen chenille while game chairs wear a heavy-duty coral-and-gold diamond weave. In the living room the designer used a



The husband's office evokes the air of an English library. Knauss replaced old knotty pine paneling with cherry and added a coffered ceiling to this room, which is two steps down from the living room. A tufted raspberry chair and raspberry-and-pale-green Wilton carpet complete the picture.



A sun porch at the side of the house was converted into an office and sitting room for the wife. This private sanctuary is a tranquil space for her morning Bible studies and, at a corner workstation (not shown), for routine office work. Knauss designed the sofa with more feminine lines and a tailored pleated skirt detail. An inviting yellow velvet tufted chair occupies one corner. The windows are framed with hand-blocked yellow-and-ivory linen panels hanging from pewter rods.



A biblically inspired wall mural forms a distinctive backdrop to the formal dining room. A chandelier with handmade shirred shades sits above the traditional dining room table the clients owned and chairs that KBK Design reupholstered. Antique French sconces frame a stately gilt mirror. Knauss added two rows of molding to the ceiling to enhance the traditional elegance.

dressier — and less hardy — beige gaufrage linen (linen with an embossed pattern) with bullion fringe detail for two sofas and accented them with beaded and embroidered throw pillows. A goldleaf coffee table with an inset mirror top sits between the sofas. A vintage marble lamp and a 1940s turned-wood lamp wear handmade shades, detailed with cream-and-yellow cording, to complement the buttercup yellow glazed walls.

In the dining room, another formal space, the designer mixed the clients' existing furnishings with new additions. She reupholstered the chairs at the imposing table and added antique French sconces

above a buffet and handmade, shirred shades to the crystal chandelier.

Knauss also brought in two additional cabinets to mirror ones on the opposite wall and added two rows of molding to the ceiling to emphasize the room's symmetry. Silk-tasseled Kensington-style valances and panels frame the windows. An unusual feature: An ethereal, biblically inspired wall mural that reflects the wife's spirituality.

There's a looser look to the kitchen, where the wife wanted to ease the home's formality, Knauss says. The designer went for a French provincial feel here with a playful checkerboard backsplash that complements a



The kitchen has a French provincial, less formal look. Details include a playful checkerboard backsplash that complements a yellow strié glazed finish on ivory custom cabinetry. A trellis-patterned floor of ivory limestone with a darker noce travertine in the middle adds interest. The designer augmented the home's color scheme here with chartreuse and blue.

The window treatment fabric — beige chintz with bursts of purple and tangerine with apple-green banding — provided the inspiration for the breakfast area, the designer says. The table's green base picks up the citrus greens of the chintz, while its stained parquet top hides scratches. The detailed pattern of a stain-resistant Persian Tabriz-style rug is a practical addition. "I love to use Oriental rugs in the kitchen," Knauss says.



yellow strié glazed finish over ivory custom cabinetry. The floor is ivory limestone with a darker noce travertine in a trellis pattern to add detail and interest. ■

Robin Amster is a Madison-based writer and editor.

SOURCES Overall: interior design, KBK Interior Design in Westfield; architect, Vincentsen Associates in Westfield; construction, Murph Construction in Westfield. **Living Room:** sofas, KBK Interior Design; rug, Stark Carpet in New York City; window treatments, Mary A. Calale in Exeter, New Hampshire; floor lamp, Knollwood Antiques in New York City. **Foyer:** chandelier, Ambience Antiques in Red Bank; rugs, Safavieh in New York City; sconces, Louis J. Solomon in New York City; mirror, Broadmoor Antiques in Lambertville; credenza, Turner An-

tiques in Lambertville. **Family Room:** sofas, KBK Interior Design; chairs at table, Edward Ferrell with Cowtan & Tout fabric; green-painted chairs at the window, Minton Spidell in Culver City, California; window treatments, Mary A. Calale; chandeliers, Heritage Lighting in Lambertville; rugs, Stark Carpet. **His Office:** millwork, R.G. Construction in North Plainfield; chair, Charles Stewart Co. in Hickory, North Carolina; ottoman, Edward Ferrell with Cowtan & Tout fabric; window treatment, Mary A. Calale; rug, Stark Carpet. **Her Office:** sofa, chair and ottoman, KBK Interior Design; rug, Stark Carpet; window treatments, Scalamandré. **Dining Room:** dining chairs, fabric by Scalamandré; chandelier, Graham's Lighting in Memphis, Tennessee; window treatment, Mary A. Calale with Cowtan & Tout fabric; mural, Daryl Hastings in Pittstown. **Kitchen:** cabinetry, R.G. Construction; countertops, Bridgewater Marble & Granite in Bound Brook; backsplash and flooring, Mediter-

As Featured in April/May 2014 Issue of

NEW JERSEY'S HOME & DESIGN MAGAZINE
designNJ



Left top: The designer created a room fit for a princess for the daughter, the family's youngest child and only girl. An ivory-and-raspberry plaid fabric on the bed's headboard and footboard as well as the armoire inset pop against the mellow yellow walls and white dresser, nightstand and armoire. The quilted bedding and graceful window treatments are raspberry-and-white toile.

Left bottom: A pale butterscotch, almond and ivory color scheme in the master bedroom spells relaxation. The designer mixed new and existing furnishings, including antique burl chests, an upholstered headboard and a bench. The client requested a bedspread that reaches the floor, which hides any bedding underneath. The room's walls are lightly glazed buttercup yellow with a ragging technique that ties into the soft beige and ivory tones of the Wilton carpet.



Below: A formal look continues in the master bathroom with paneled walls above decorative stone tile and swag-and-jabot window treatments that soften the architectural elements. The floor is inset with a limestone tile "rug."



ranean Marble & Tile in Fairfield; lighting fixtures, Heritage Lighting. **Breakfast Area:** table and chairs, Wood & Hogan in New York City; window treatments, Scalamandré. **Daughter's Bedroom:** dresser, nightstand and armoire, Bograd Kids in New York City; bedding and upholstery fabric, Manuel Canovas; window treatments, Mary A. Calale. **Master Bedroom:** headboard, Workroom Services in Warren with fabric by Brun-schwig and Fils; nightstands, clients'; chair, reupholstered by Workroom Services with fabric by Brun-schwig and Fils; rug, Stark Carpet; bedspread, fabric by Cowtan & Tout. **Master Bathroom:** vanity, R.G. Construction; flooring, Mediterranean Tile & Marble; window treatments, Mary A. Calale; sconces, Vaughan Design in New York City.